

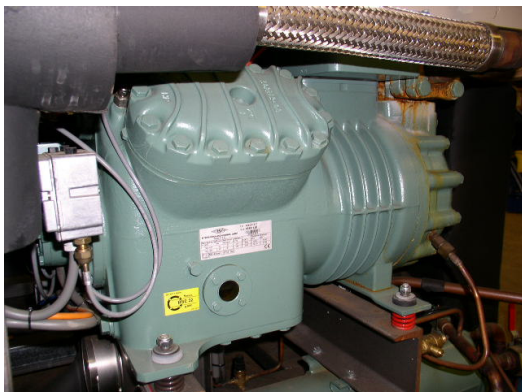
BITZER WATERCHILLER – 1837 - HOS B.V.



Compressor:

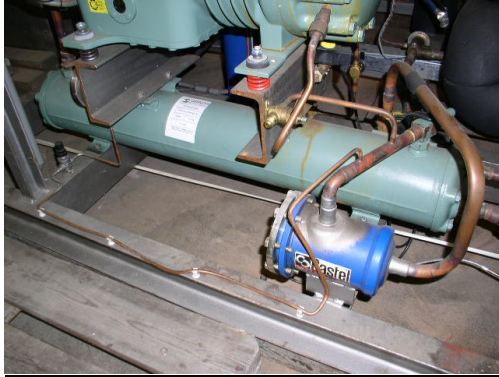
Brand: Bitzer
Type: 4G-20.2
Capacity: 57,2 kW at -5°C/+40°C
Including:

- Pressure safety switches
- Sight glass
- Unloaded start
- Capacity control
- Liquid line filter dryer
- Solenoid valve
- Suction accumulator



Watercooled condensor:

Brand: Bitzer
Type: K 373 H
Capacity: 77,7 kW
Flow: 10,71 m³/h
Contents: 14,5 ltr.



Circulation pump:

Brand: KSB
Ident. Nr.: 01053393
Capacity: 0,37 kW
RPM: 1370
A: 1,78/1,03
Hz: 50



Transport pump:

Brand: ABB
Capacity: 3 kW
RPM: 2900
A: 3,6



Sealed expansion vessel:

Brand: Flexcon
Type: 50/0,5 (50 ltr. / 0,5 bar)



Water supply vessel:



Control panel:

